

LED Neon Strip – Top-Bend



Highlights:

- Using top brand food grade silicon materials and co-extrusion manufacturing offers premium UV resistance, chemical stability, and against abrasion.
- IP67 for indoor and outdoor usage.
- Maximum up to 5 meters per continuous run length powered from one end.
- Optional profile kit, included: Aluminum profile, angle adjustable brackets, and stainless steel track;
- Dimming available with PWM signal.
- 50,000 hours lifespan.

Application Areas:

- Ideal for decorative and contour lighting for commercial, architectural and landscape spaces.



Technical Parameters:

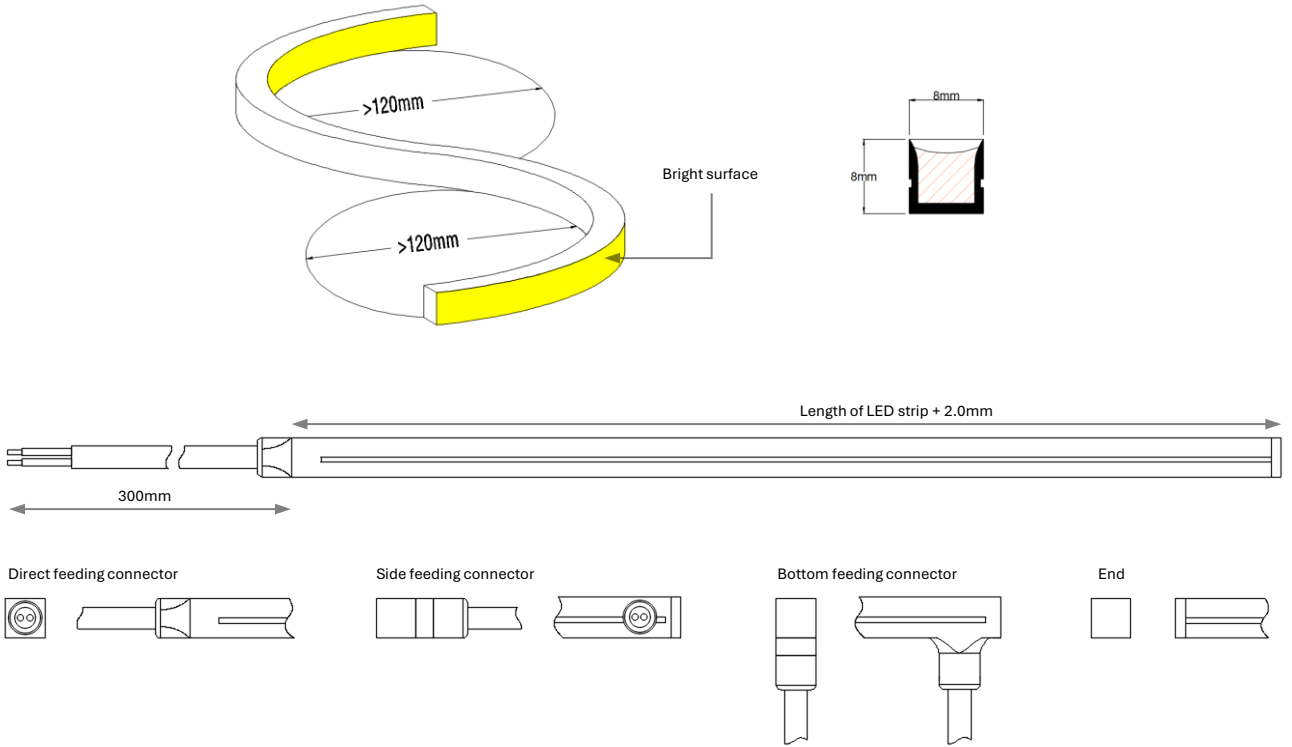
Code	IB-NS-09E-TB24xxx-8W-0808 (xxx: 2700K: 927, 3000K: 930, 4000K: 940, 6000K: 960)
Electronic data	
Input voltage	24VDC
Rated Power	8W/m
Optical / Photometric	
LED type	SMD 2216
LED Qty/m	226 LEDs/m
Lumen / meter @ 2700K	405 lm
Lumen / meter @ 3000K	428 lm
Lumen / meter @ 4000K	450 lm
Lumen / meter @ 6000K	450 lm
CCT	2700K / 3000K / 4000K / 6000K
CRI	≥ 90
SDCM	< 3
Beam angle	120°
Mechanical	
Dimension / reel (L*W*H)	5000*8*8mm
Housing material	Silicone
Housing color	White
Ingress protection	IP67
Cutting length	Free-cutting to be any length
Others	
Rated lifetime	50,000 hrs
Operating Ambient	20~45°C
Certification	RoHS, CE, UL

Technical Parameters:

Code	IB-NS-09E-TB24xxx-6W-0808 (xxx: 2700K: 927, 3000K: 930, 4000K: 940, 6000K: 960)
Electronic data	
Input voltage	24VDC
Rated Power	6.4W/m
Optical / Photometric	
LED type	SMD 2216
LED Qty/m	226 LEDs/m
Lumen / meter @ 2700K	325 lm
Lumen / meter @ 3000K	345 lm
Lumen / meter @ 4000K	360lm
Lumen / meter @ 6000K	360lm
CCT	2700K / 3000K / 4000K / 6000K
CRI	≥ 90
SDCM	< 3
Beam angle	120°
Mechanical	
Dimension / reel (L*W*H)	5000*8*8mm
Housing material	Silicone
Housing color	White
Ingress protection	IP67
Cutting length	Free-cutting to be any length
Others	
Rated lifetime	50,000 hrs
Operating Ambient	20~45°C
Certification	RoHS, CE, UL

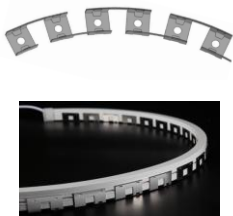
Dimension

Unit: mm

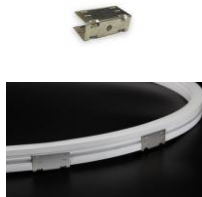


Accessories (ordered separately)

Flexible bracket



Fixed bracket



Aluminum profile



Note:

- We are not responsible for damage of neon strip due to chemical corrosion caused by incorrect operation. The user must provide suitable protection against serious corrosive agents, such as moisture and condensation and any other harmful elements/compounds.
- Adopt suitable power supply with power is 20% higher than the max. power of luminary, to ensure long time performance of power supply.
- Do not install it when power is on. Before powering on, make sure the wiring is correct.
- Avoid privately changing or damaging the circuit or other component on the luminary.
- Avoid scrape, twist and irregular bend during installation, which might cause non repairable status for the luminary.
- Minimum bending diameter definition is 120mm, too small bending diameter will break the product.
- Minimum twist degree is 360° per 1000mm.
- Luminary linked in over long length will lead to problem of overload or uneven brightness.
- To protect your eyes, do not stare at the luminary for a long time while it's illuminated.
- Only professional personnel can install, dismantle and repair.

Edition

Data is subject to change without notice.
Please contact us for detailed information.

Release Date	Issuance of Category
2025.10.01	The 1st. Version