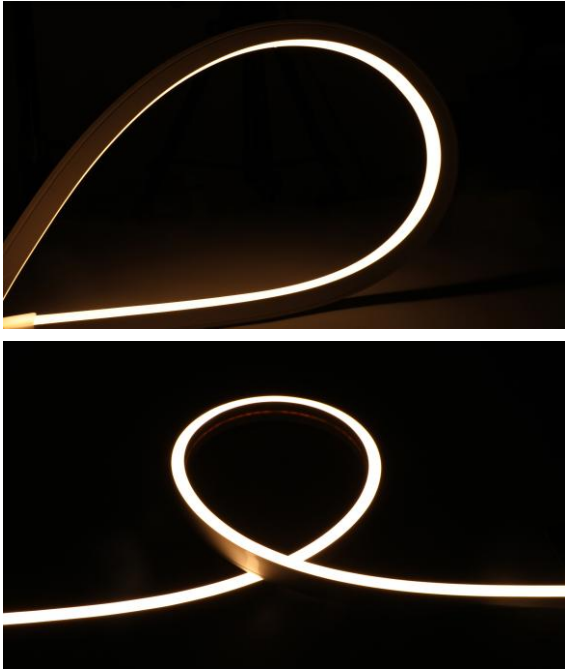


LED Neon Strip for Sauna Room and Snow Room



Highlights:

- Using top brand food grade silicon materials and co-extrusion manufacturing offers premium UV resistance, chemical stability, and against abrasion.
- High waterproof rating in IP67 using silicone extrusion process, ensures the stability and effectiveness of waterproofing, even under extreme hot and cold of working environment.
- Maximum up to 5 meters per continuous run length powered from one end.
- Optional profile kit, included: Aluminum profile, angle adjustable brackets, and stainless steel track;
- Dimming available with PWM signal.
- 50,000 hours lifespan.

Application Areas:

- Indirect lighting solution ideal for high-temperature sauna/steam room and low-temperature snow/ice room of SPA and wellness.



Technical Parameters:

Code	IB-NS-6DTB24xxx-10-2020SA (xxx: 2700K: 927, 3000K: 930, 4000K: 940, 6000K: 960)
Electronic data	
Input voltage	24VDC
Rated Power	9.6W/m
Optical / Photometric	
LED type	SMD 2835
LED Qty/m	120 LEDs/m
Lumen / meter @ 2700K	380 lm
Lumen / meter @ 3000K	390 lm
Lumen / meter @ 4000K	420 lm
Lumen / meter @ 6000K	410 lm
CCT	2700K / 3000K / 4000K / 6000K
CRI	≥ 90
SDCM	< 3
Beam angle	120°
Mechanical	
Style	Top-bend
Dimension / reel (L*W*H)	5000*20*20mm
Housing material	Silicone
Housing color	White
Ingress protection	IP67
Cutting length	50mm
Others	
Rated lifetime	50,000 hrs
Operating Ambient	Ta (working): -25-100°C [-13-212°F] (Sauna room is usually ≤85°C[185°F] and is occasionally 85-100°C [185-212°F], Ice room is usually -10-0°C [14-32°F] Tstg (storage): -20~60°C [-4~140°F].
Certification	RoHS, CE, UL

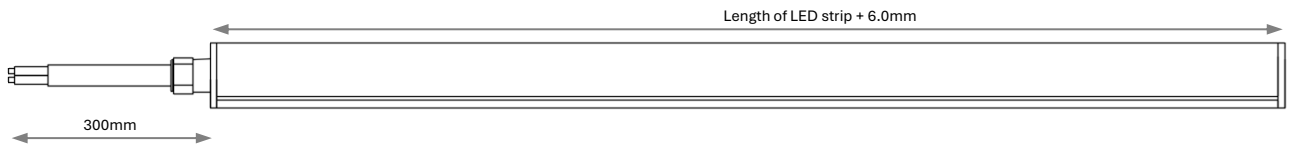
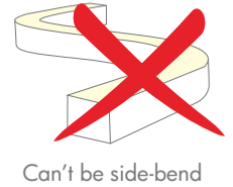
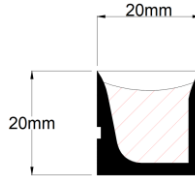
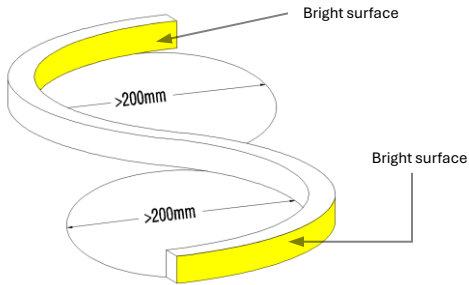
Technical Parameters:

Code	IB-NS-CDSB24xxx-10-1020SA (xxx: 2700K: 927, 3000K: 930, 4000K: 940, 6000K: 960)
Electronic data	
Input voltage	24VDC
Rated Power	9.6W/m
Optical / Photometric	
LED type	SMD 2835
LED Qty/m	120 LEDs/m
Lumen / meter @ 2700K	260 lm
Lumen / meter @ 3000K	270 lm
Lumen / meter @ 4000K	290 lm
Lumen / meter @ 6000K	284 lm
CCT	2700K / 3000K / 4000K / 6000K
CRI	≥ 90
SDCM	< 3
Beam angle	120°
Mechanical	
Style	Side-bend
Dimension / reel (L*W*H)	5000*10*20mm
Housing material	Silicone
Housing color	White
Ingress protection	IP67
Cutting length	Free-cutting to be any length
Others	
Rated lifetime	50,000 hrs
Operating Ambient	Ta (working): -25-100°C [-13-212°F] (Sauna room is usually ≤85°C[185°F] and is occasionally 85-100°C [185-212°F], Ice room is usually -10-0°C [-14-32°F]) Tstg (storage): -20~60°C [-4~140°F].
Certification	RoHS, CE, UL

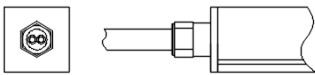
Top-bend IB-NS-6DTB24xxx-10-2020SA

Dimension

Unit: mm



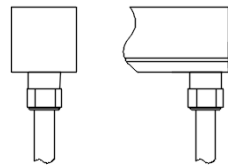
Direct feeding connector



Side feeding connector



Bottom feeding connector

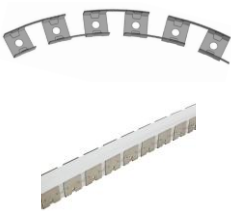


End

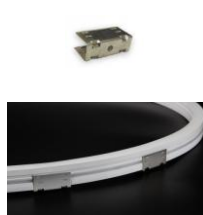


Accessories (ordered separately)

Flexible bracket



Fixed bracket



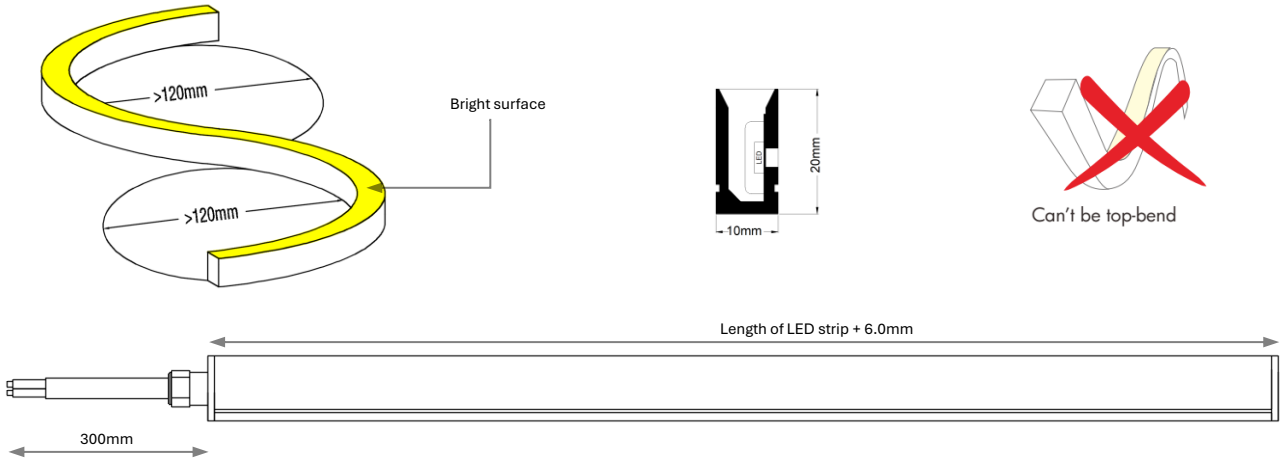
Aluminum profile



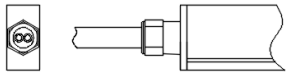
Side-bend IB-NS-CDSB24xxx-10-1020SA

Dimension

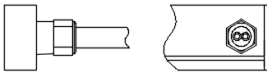
Unit: mm



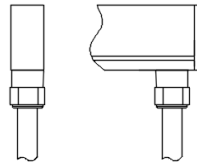
Direct feeding connector



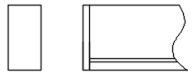
Side feeding connector



Bottom feeding connector



End



Accessories (ordered separately)

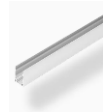
Flexible bracket



Fixed bracket



Aluminum profile



Note:

- We are not responsible for damage of neon strip due to chemical corrosion caused by incorrect operation. The user must provide suitable protection against serious corrosive agents, such as moisture and condensation and any other harmful elements/compounds.
- Adopt suitable power supply with power is 20% higher than the max. power of luminary, to ensure long time performance of power supply.
- Do not install it when power is on. Before powering on, make sure the wiring is correct.
- Avoid privately changing or damaging the circuit or other component on the luminary.
- Avoid scrape, twist and irregular bend during installation, which might cause non repairable status for the luminary.
- Minimum bending diameter definition is 200mm for Top-bend IBS-NS-109TB24xxx-10-2020SA and 120mm for Side-bend IBS-NS-205SB24xxx-10-1020SA, too small bending diameter will break the product.
- Minimum twist degree is 360° per 1000mm.
- Luminary linked in over long length will lead to problem of overload or uneven brightness.
- To protect your eyes, do not stare at the luminary for a long time while it's illuminated.
- Only professional personnel can install, dismantle and repair.

Edition

Data is subject to change without notice.
Please contact us for detailed information.

Release Date	Issuance of Category
2025.10.01	The 1st. Version