

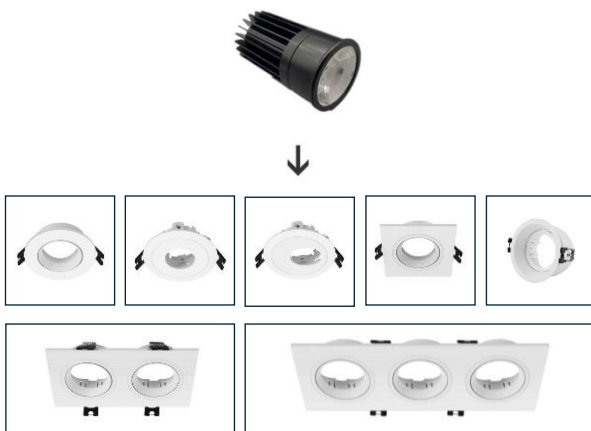
LED Downlight Module



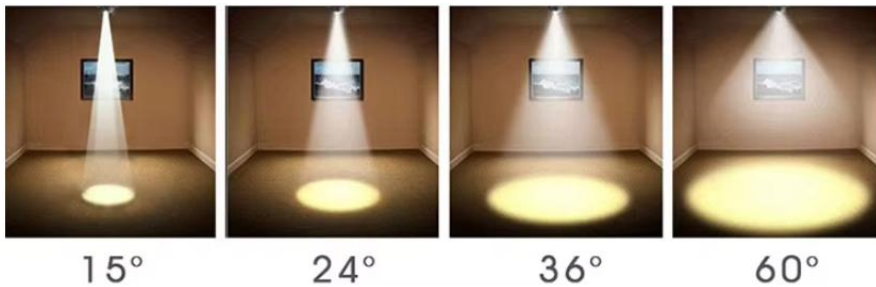
Highlights:

- Beam angle by lens: 15/24/36/60°;
- Honeycomb Available too;
- To Replace the GU10/MR16 Bulb;
- Longer Lifespan: 50,000hrs;
- CRI: RA90 or RA95 (option);
- Higher Brightness/Luminous: 125lm/w;
- Lower Power Consumption;
- Reduce Greenhouse Gas Emissions;
- Other dimming type: 0-10V/Triac/Dali/Dmx/Phase Dim/ CCT Tunable all available.

Easy to install light source



Four Beam Angles For Options



Technical Parameters:

Code	IB-LM50-927-12W-IP20	IB-LM50-930-12W-IP20	IB-LM50-940-12W-IP20	IB-LM50-965-12W-IP20
Electronic data				
Input voltage	DC36V 300mA	DC36V 300mA	DC36V 300mA	DC36V 300mA
Rated Power	12W	12W	12W	12W
Dimmable	Yes	Yes	Yes	Yes
Optical / Photometric				
LED chips	1pcs # LEDVANCE COB	1pcs # LEDVANCE COB	1pcs # LEDVANCE COB	1pcs # LEDVANCE COB
Lumen	1035 lm @ 36°	1090 lm @ 36°	1150 lm @ 36°	1150 lm @ 36°
CCT	2700K	3000K	4000K	6500K
CRI	≥ 90	≥ 90	≥ 90	≥ 90
Beam angle	15°/24°/36°/60°	15°/24°/36°/60°	15°/24°/36°/60°	15°/24°/36°/60°
Mechanical				
Dimension	D50*H88mm	D50*H88mm	D50*H88mm	D50*H88mm
Housing material	High Heat Dissipation of Cold Forging Aluminum	High Heat Dissipation of Cold Forging Aluminum	High Heat Dissipation of Cold Forging Aluminum	High Heat Dissipation of Cold Forging Aluminum
Ingress protection	IP20	IP20	IP20	IP20
Others				
Rated lifetime	50,000 hrs	50,000 hrs	50,000 hrs	50,000 hrs
Operating Ambient	20~45°C	20~45°C	20~45°C	20~45°C

Edition

Data is subject to change without notice.
Please contact us for detailed information.

Release Date

2025.07.01

Issuance of Category

The 1st. Version