

## LED Strip COB Value

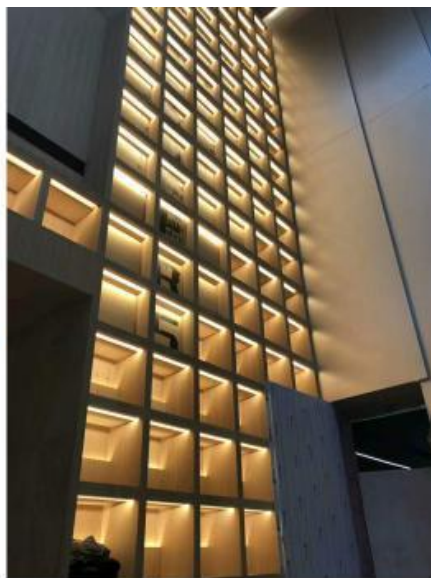


### Highlights:

- Higher density of LEDs, resulting in a brighter and more uniform light output..
- Homogeneous and soft linear lighting performance for 5M length.
- 150° beam angle and small cuttable length to support freely configurable in length for precise field installation.
- Adopting an exclusively designed protective structure, with excellent bending resistance, strong reliability, and stable quality.
- SDCM≤3 to ensure color consistency.
- Waterproof available in IP67 for indoor and outdoor scenes.
- 50,000 hours lifespan.

### Application Areas:

- Direct / surface lighting
- Individual and customized lighting
- Architectural integration
- Object integration
- Cove lighting



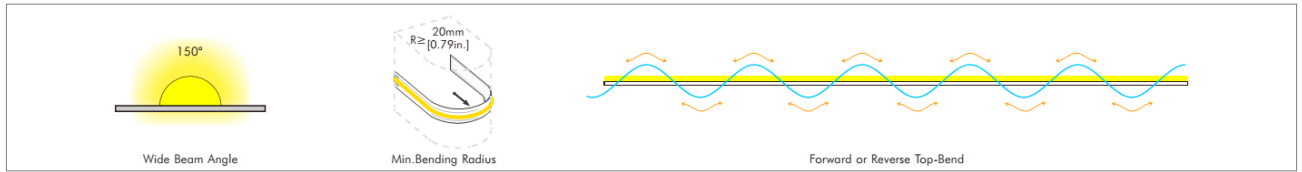
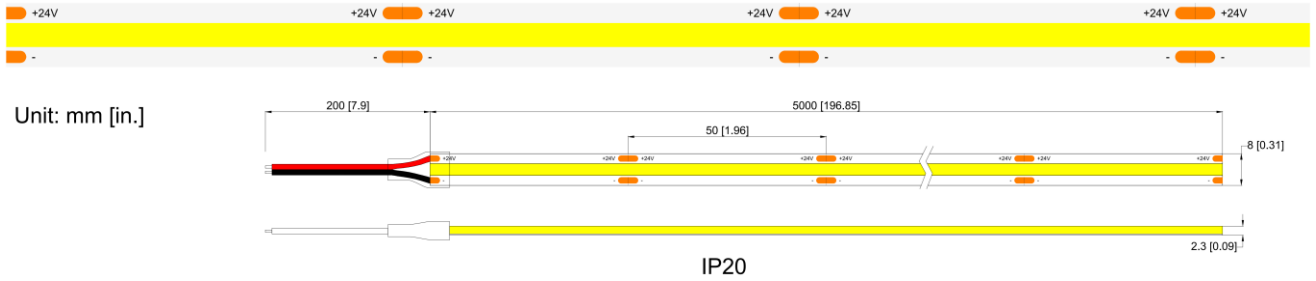
## Technical Parameters:

Code	IB-FCOB <sub>xxx</sub> -24V-12W-IP20 (XXX: 2700K: 927, 3000K: 930, 4000K: 940, 5000K: 950, 6500K: 965)
<b>Electronic data</b>	
Input voltage	24VDC
Rated Power	12W/m
<b>Optical / Photometric</b>	
Light Source	COB (Chip On Board)
Chip Qty/m	480chips/M
Lumen / meter @ 2700K	1060 lm
Lumen / meter @ 3000K	1070 lm
Lumen / meter @ 4000K	1200 lm
Lumen / meter @ 5000K	1250 lm
Lumen / meter @ 6500K	1300 lm
CCT	2700K / 3000K / 4000K / 5000K / 6500K
CRI	≥ 90
SDCM	ANSI Norm, 3 step in 1 bin
Beam angle	150°
<b>Mechanical</b>	
Dimension / reel (L*W*H)	5000*8*2.3mm
Housing material	Silicone
Ingress protection	IP20
Cutting length	50mm
<b>Others</b>	
Rated lifetime	50,000 hrs
Operating Ambient	20~45°C
Certification	RoHS, CE, UL

## Technical Parameters:

Code	IB-FCOBxxx-24V-12W-IP67 (XXX: 2700K: 927, 3000K: 930, 4000K: 940, 5000K: 950, 6500K: 965)
<b>Electronic data</b>	
Input voltage	24VDC
Rated Power	12W/m
<b>Optical / Photometric</b>	
Light Source	COB (Chip On Board)
Chip Qty/m	480chips/M
Lumen / meter @ 2700K	1010 lm
Lumen / meter @ 3000K	1020 lm
Lumen / meter @ 4000K	1140 lm
Lumen / meter @ 5000K	1190 lm
Lumen / meter @ 6500K	1240 lm
CCT	2700K / 3000K / 4000K / 5000K / 6500K
CRI	≥ 90
SDCM	ANSI Norm, 3 step in 1 bin
Beam angle	150°
<b>Mechanical</b>	
Dimension / reel (L*W*H)	5000*10*4mm
Housing material	Silicone
Ingress protection	IP67
Cutting length	50mm
<b>Others</b>	
Rated lifetime	50,000 hrs
Operating Ambient	20~45°C
Certification	RoHS, CE, UL

Picture & Diagram



Accessories (ordered separately)

- ❖ Strip to Wire connector for COB LED strip IP20



- ❖ Strip to Strip connector for COB LED strip IP20



- ❖ L Shape Strip to Strip connector for COB LED strip IP20



Accessories (ordered separately)

- ❖ Strip to Wire connector for COB LED strip IP65 – IP67



- ❖ T Shape Strip to Wire connector for COB LED strip IP65 – IP67



- ❖ Strip to Strip connector for COB LED strip IP65 – IP67



- ❖ L Shape Strip to Strip connector for COB LED strip IP65 – IP67



- ❖ T Shape Strip to Strip connector for COB LED strip IP65 – IP67



Edition

Release Date	Issuance of Category
2025.07.01	The 1st. Version
2025.07.28	The 2nd. Version

Data is subject to change without notice.  
Please contact us for detailed information.