

LED Strip COB Value

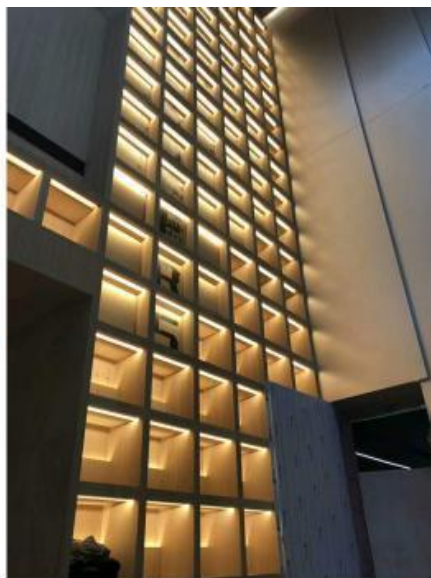


Highlights:

- Higher density of LEDs, resulting in a brighter and more uniform light output..
- Homogeneous and soft linear lighting performance for 5M length.
- 150° beam angle and small cuttable length to support freely configurable in length for precise field installation.
- Adopting an exclusively designed protective structure, with excellent bending resistance, strong reliability, and stable quality.
- SDCM≤3 to ensure color consistency.
- Waterproof available in IP67 for indoor and outdoor scenes.
- 50,000 hours lifespan.

Application Areas:

- Direct / surface lighting
- Individual and customized lighting
- Architectural integration
- Object integration
- Cove lighting



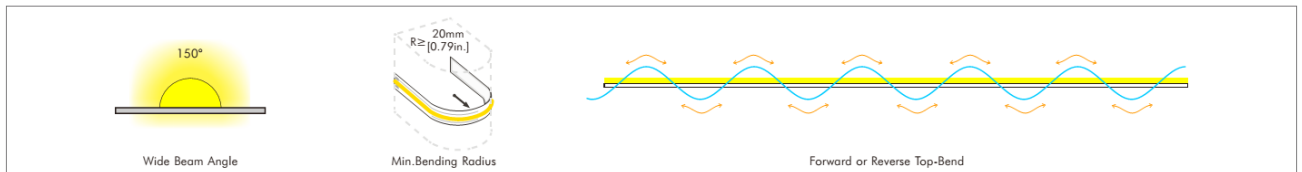
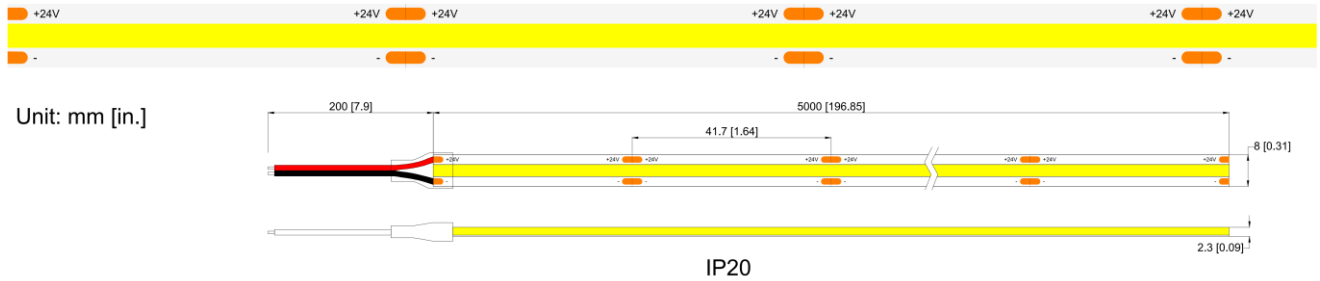
Technical Parameters:

| Code | IB-FCOB _{xxx} -24V-10W-IP20 (XXX: 2700K: 927, 3000K: 930, 4000K: 940, 5000K: 950, 6500K: 965) |
|------------------------------|---|
| Electronic data | |
| Input voltage | 24VDC |
| Rated Power | 10W/m |
| Optical / Photometric | |
| Light Source | COB (Chip On Board) |
| Chip Qty/m | 384chips/M |
| Lumen / meter @ 2700K | 860 lm |
| Lumen / meter @ 3000K | 900 lm |
| Lumen / meter @ 4000K | 1000 lm |
| Lumen / meter @ 5000K | 1010 lm |
| Lumen / meter @ 6500K | 1030 lm |
| CCT | 2700K / 3000K / 4000K / 5000K / 6500K |
| CRI | ≥ 90 |
| SDCM | ANSI Norm, 3 step in 1 bin |
| Beam angle | 150° |
| Mechanical | |
| Dimension / reel (L*W*H) | 5000*8*2.3mm |
| Housing material | Silicone |
| Ingress protection | IP20 |
| Cutting length | 41.7mm |
| Others | |
| Rated lifetime | 50,000 hrs |
| Operating Ambient | 20~45°C |
| Certification | RoHS, CE, UL |

Technical Parameters:

| Code | IB-FCOB _{xxx} -24V-10W-IP67 (XXX: 2700K: 927, 3000K: 930, 4000K: 940, 5000K: 950, 6500K: 965) |
|------------------------------|---|
| Electronic data | |
| Input voltage | 24VDC |
| Rated Power | 10W/m |
| Optical / Photometric | |
| Light Source | COB (Chip On Board) |
| Chip Qty/m | 384chips/M |
| Lumen / meter @ 2700K | 820 lm |
| Lumen / meter @ 3000K | 860 lm |
| Lumen / meter @ 4000K | 950 lm |
| Lumen / meter @ 5000K | 960 lm |
| Lumen / meter @ 6500K | 980 lm |
| CCT | 2700K / 3000K / 4000K / 5000K / 6500K |
| CRI | ≥ 90 |
| SDCM | ANSI Norm, 3 step in 1 bin |
| Beam angle | 150° |
| Mechanical | |
| Dimension / reel (L*W*H) | 5000*10*4mm |
| Housing material | Silicone |
| Ingress protection | IP67 |
| Cutting length | 41.7mm |
| Others | |
| Rated lifetime | 50,000 hrs |
| Operating Ambient | 20~45°C |
| Certification | RoHS, CE, UL |

Picture & Diagram



Accessories (ordered separately)

- ❖ Strip to Wire connector for COB LED strip IP20



- ❖ Strip to Strip connector for COB LED strip IP20



- ❖ L Shape Strip to Strip connector for COB LED strip IP20



Accessories (ordered separately)

- ❖ Strip to Wire connector for COB LED strip IP65 – IP67



- ❖ T Shape Strip to Wire connector for COB LED strip IP65 – IP67



- ❖ Strip to Strip connector for COB LED strip IP65 – IP67



- ❖ L Shape Strip to Strip connector for COB LED strip IP65 – IP67



- ❖ T Shape Strip to Strip connector for COB LED strip IP65 – IP67



Edition

| Release Date | Issuance of Category |
|--------------|----------------------|
| 2025.07.01 | The 1st. Version |
| 2025.07.28 | The 2nd. Version |

Data is subject to change without notice.
Please contact us for detailed information.