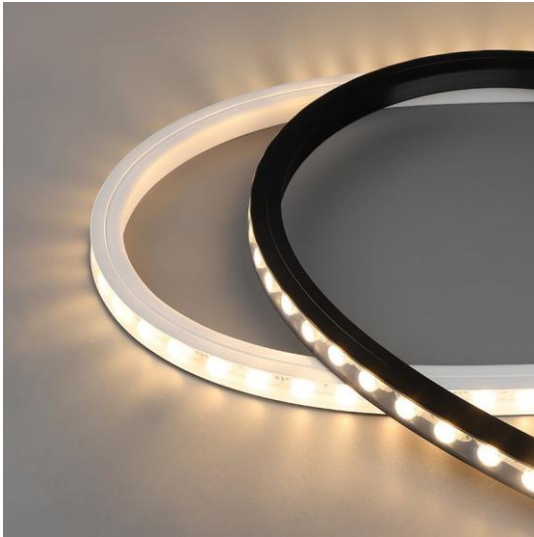


Flexible LED Wall Washer



Highlights:

- Using top brand food grade silicon materials and co-extrusion manufacturing offers premium UV resistance, chemical stability, and against abrasion.
- Dual-bend flexible strip available in both top-bend and side-bend, perfectly fixing for many plane, curved and complex irregular structures.
- Optional optic PMMA lens with multiple beam angles for different kinds of project.
- IP67 for indoor and outdoor usage.
- Maximum up to 5 meters per continuous run length powered from one end.
- Optional profile kit, included: Aluminum profile, angle adjustable brackets, and stainless steel track;
- Dimming available with PWM signal.
- 50,000 hours lifespan.

Application Areas:

- Suitable for outdoor building lighting, landscape lighting, wall washing lighting and other scenes.



Technical Parameters:

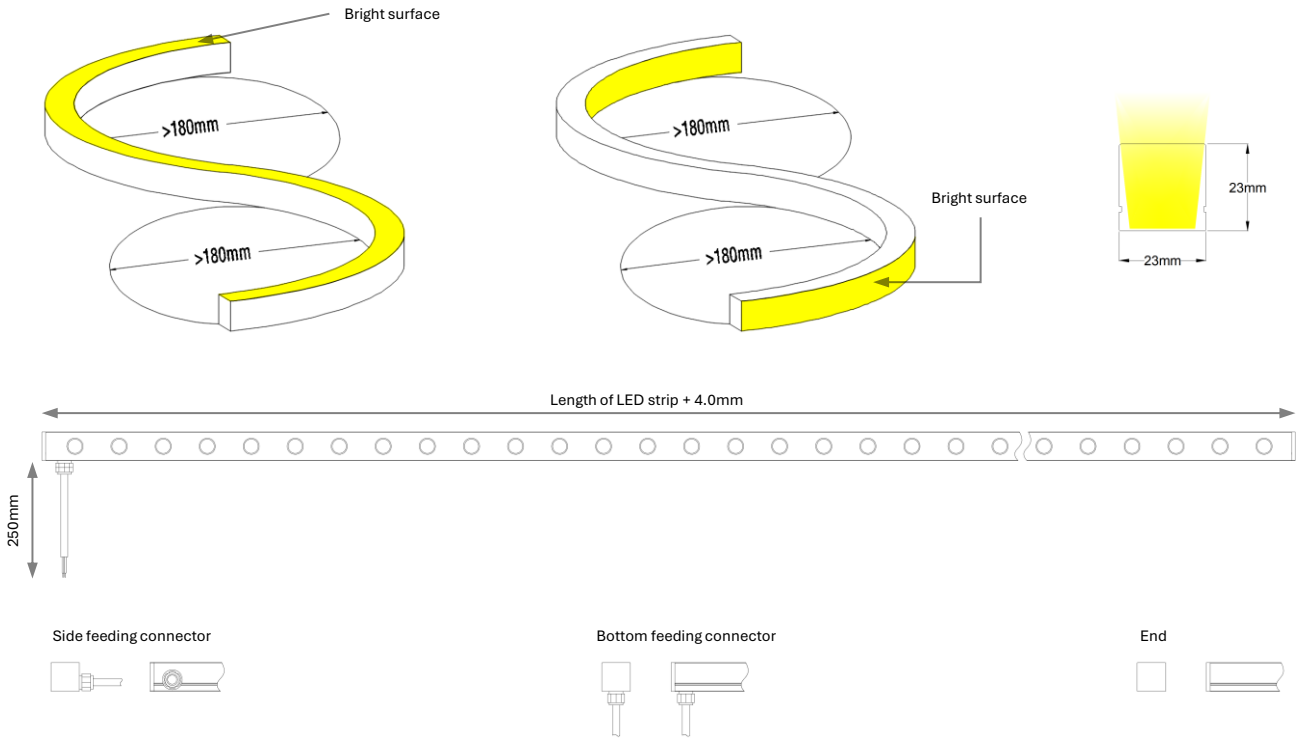
Code	IB-NS-W73-DB24xxx-18W-yy-2323 (xxx: 2700K: 927, 3000K: 930, 4000K: 940; yy: Beam angle 15°: 15, Beam angle 25°: 25, Beam angle 30°: 30, Beam angle 45°: 45, Beam angle 60°: 60)
Electronic data	
Input voltage	24VDC
Rated Power	18W/m
Optical / Photometric	
LED type	SMD 3030
LED Qty/m	28 LEDs/m
Lumen / meter @ 2700K	1450 lm
Lumen / meter @ 3000K	1530 lm
Lumen / meter @ 4000K	1600 lm
CCT	2700K / 3000K / 4000K
CRI	≥ 90
SDCM	< 3
Beam angle	15° / 25° / 30° / 45° / 60°
Mechanical	
Dimension / reel (L*W*H)	50000*23*23mm
Housing material	Silicone
Housing color	White
Ingress protection	IP67
Cutting length	250mm
Others	
Rated lifetime	50,000 hrs
Operating Ambient	20~45°C
Certification	RoHS, CE, UL

Technical Parameters:

Code	IB-NS-B73-DB24xxx-18W-yy-2323 (xxx: 2700K: 927, 3000K: 930, 4000K: 940; yy: Beam angle 15°: 15, Beam angle 25°: 25, Beam angle 30°: 30, Beam angle 45°: 45, Beam angle 60°: 60)
Electronic data	
Input voltage	24VDC
Rated Power	18W/m
Optical / Photometric	
LED type	SMD 3030
LED Qty/m	28 LEDs/m
Lumen / meter @ 2700K	1300 lm
Lumen / meter @ 3000K	1370 lm
Lumen / meter @ 4000K	1440lm
CCT	2700K / 3000K / 4000K
CRI	≥ 90
SDCM	< 3
Beam angle	15° / 25° / 30° / 45° / 60°
Mechanical	
Dimension / reel (L*W*H)	50000*23*23mm
Housing material	Silicone
Housing color	Black
Ingress protection	IP67
Cutting length	250mm
Others	
Rated lifetime	50,000 hrs
Operating Ambient	20~45°C
Certification	RoHS, CE, UL

Dimension

Unit: mm

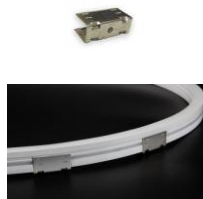


Accessories (ordered separately)

Flexible bracket



Fixed bracket



Aluminum profile



Note:

- We are not responsible for damage of neon strip due to chemical corrosion caused by incorrect operation. The user must provide suitable protection against serious corrosive agents, such as moisture and condensation and any other harmful elements/compounds.
- Adopt suitable power supply with power is 20% higher than the max. power of luminary, to ensure long time performance of power supply.
- Do not install it when power is on. Before powering on, make sure the wiring is correct.
- Avoid privately changing or damaging the circuit or other component on the luminary.
- Avoid scrape, twist and irregular bend during installation, which might cause non repairable status for the luminary.
- Minimum bending diameter definition is 180mm, too small bending diameter will break the product.
- Minimum twist degree is 360° per 1000mm.
- Luminary linked in over long length will lead to problem of overload or uneven brightness.
- To protect your eyes, do not stare at the luminary for a long time while it's illuminated.
- Only professional personnel can install, dismantle and repair.

Edition

Data is subject to change without notice.
Please contact us for detailed information.

Release Date	Issuance of Category
2025.10.01	The 1st. Version